



# Man of Sorrows

REAL KEY

"He was despised and rejected by men, a man of sorrows, and familiar with suffering." | Isaiah 53:3

♩ = 88

Lyrics and Tune by Philip P. Bliss  
Arr. Jody Killingsworth and Philip Moyer

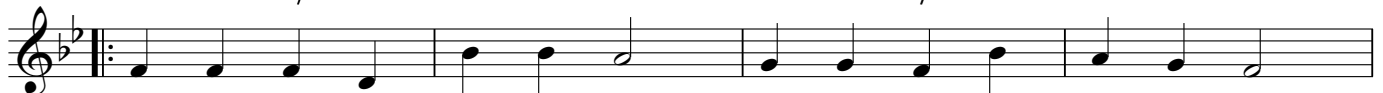
## INTRO

B♭ Dm/A Gm B♭/F E♭ B♭ F Gm E♭ B♭ F7



## VERSE

B♭ Dm/A Gm D7 E♭ B♭/D C F



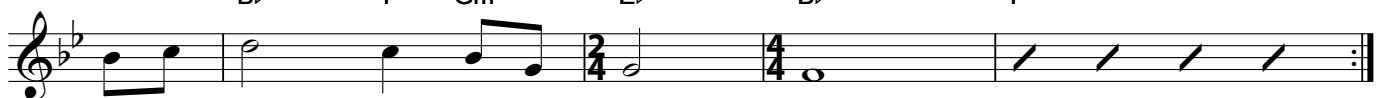
1. Man of Sor - rows! what a name For the Son of God, Who came  
 2. Bear - ing shame and scof - fing rude, In my place con - demned He stood,  
 3. Guilt - y, vile, and help - less we; Spot - less Lamb of God was He;  
 4. Lift - ed up was He to die; "It is fin - ished!" was His cry;  
 5. When He comes, our glo - rious King, All His ran - somed home to bring,

B♭ Dm/A Gm B♭/F E♭



Ru - ined sin - ners to re - claim:  
 Sealed my par - don with His blood:  
 Full a - tone - ment! can it be?  
 Now in heav'n ex - alt - ed high:  
 Then a - new this song we'll sing:

1.-4. B♭ F Gm E♭ B♭ F7



Hal - le - lu - jah! What a Sav - ior!

5. B♭ F Gm E♭ B♭



Hal - le - lu - jah! What a Sav - ior!

