

Come Now, My Friend

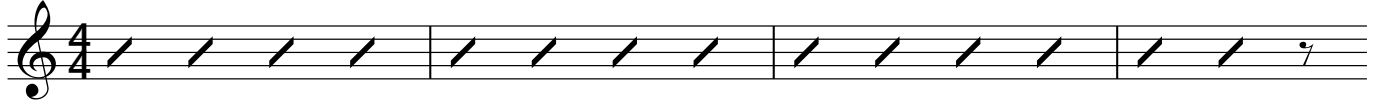
— PSALM 11 —

CAPO I

♩ = 98

INTRO

C



VERSE



C

Am



1. Come now, my friend, how can you say, Like a
 2. Look out, you say, the wick-ed's bow Has got an
 3. Come now, my friend, you need to know It is
 4. So now, my friend, I hope you'll hear There's no

G

C

C



bird up to his moun-tain I should fly a - way? All hope is gone, this is the
 ar - row on the string and he will let it go All hope is gone, they say it's
 noth-ing for the LORD to break the wick - ed's bow It's in His pow'r to judge all
 rea-son for you now to be a slave to fear For God is great, and God is

Am

G

C

To Coda



end Now re-treat's the on - ly course that you would rec - om-mend My friend, your
 true That when four - da-tions are de-stroyed what can the righ-teous do? My friend, but
 men If there's one in love with vio - lence, God will deal with Him He'll send the
 good And He'll re - ward the righ-teous man just like He said He would By giv - ing

Am

G

1.

C

2.3.

C



coun-sel of_ de - feat is like_ a coal It burns my soul
 you for-get the LORD is on_ His throne And we're His own
 fi - re of_ a might-y burn-ing wind And bring an end

CAPO I

CHORUS

C/B Am G

The LORD is in His ho - ly tem - ple He that rules the earth is in His

C C/B Am

heav'n His eyes be - hold, His eye - lids test The

Am G 2. 3.

hearts and minds of all the sons of men

CHORUS

Am G

The LORD is in His ho - ly tem - ple He that rules the earth is in His

C G C/B Am

heav'n His eyes be - hold, His eye - lids test The

G D.S. al Coda

hearts and minds of all the sons of men

TAG

Am G

all His sons the warmth of His em - brace By put - ting

Am G Am

all re - bel - lious sin - ners in their place And one day those of us who've trust - ed in His

G C G C

grace Will see His face

