

How Long, O LORD?

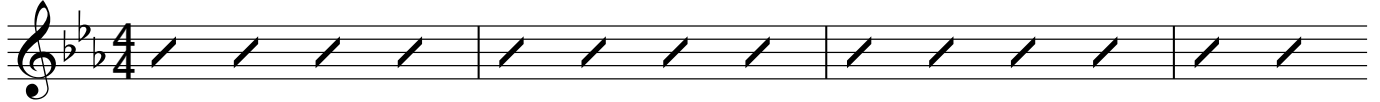
REAL KEY

— PSALM 13 —

♩ = 80

INTRO

Cm



VERSE

Cm

Fm

Bb

Cm



1. How long, O LORD? Will You hide Your face for-ev - er? Will we
 2. How long, O LORD? Will my heart be drowned in sor - row? If I

Fm

Bb

Cm

Gm/Bb

Gm



talk no_ more to-geth - er? I strain my ear but hear my thoughts a -
 lose more ground to-mor - row My foes_ will think that they have o - ver -

1. Ab

Bb

Cm

2. Ab

Bb

Eb



lone How long, O LORD? come How long, O LORD?

CHORUS



Ab

Eb

Bb



How long, O LORD? For I_ have trust - ed You Send Your

Ab

Eb

Bb

Ab

Ab

Bb



love, don't let it be un - true I will sing_ for mer - cies I once

Cm

Ab

Bb

Eb

To Coda

Eb/D



knew Re - turn_ to me; how_ long, O LORD?_

INTERLUDE

Chord progression for Interlude:

Cm Fm Bb Cm Fm Bb

Cm Gm/Bb Gm Ab Bb Cm

VERSE

3. How long, O LORD? I am fight - ing for sur - viv - al If my

eyes don't see re - viv - al Then I will sleep the bit - ter sleep of

death How long, O LORD? **D.S. al Coda**

CHORUS

CODA How long, O LORD? For all my hope's in You Send Your

love, don't let it be un - true I will sing; it's what You said to

do Re - turn to me; How long, O LORD?

When will it be? How long, O LORD?