

Refuge

— PSALM 11 —

CAPO VI

♩ = 92

INTRO

Am F Em Am F Em



VERSE

Am F Em



1. In the LORD_ I take ref - uge
 2. "I've seen the wick - ed's bow bend - ing
 3. In the LORD_ I take ref - uge
 4. To God who judg - es the righ - teous

Am F Em



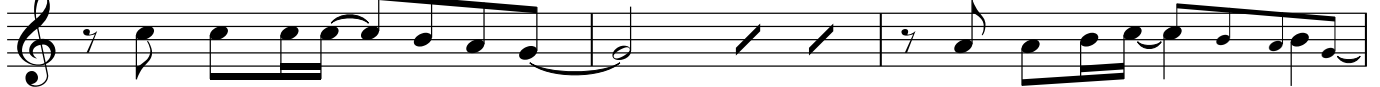
How can you say__ to my soul:___
 I hear he's search - ing for you___
 Why do you coun - sel de - spair___
 Whose righ - teous soul__ burns with hate___

F C Am G



"Fly like a bird__ far a - way___ to your moun - tain
 With all a - round the foun - da - tions up - end - ing
 When all a - round us the signs___ of God's bless - ings
 When He dis - cov - ers the lov - ers of vio - lence

F C G Am F



Ain't noth - ing left_ herebut woe___ Head for the hills andlet's go_
 And us with num - bers so few___ What can the righ - teous
 Form mon - u - ments to His care?___ Lift up your hearts__ in
 And pours His wrath on their pate___ O they de - serve__ their

1.3. Em 2. Em G



— do?" You ask__
 pray'r fate

CHORUS

F Csus C

1. But the LORD is in His ho - ly tem - - ple _____
 2. For the LORD is in His ho - ly tem - - ple _____
 3. For the LORD is in His ho - ly tem - - ple _____

F C

God is on His throne high in His heav'n____
 God is on His throne high in His heav'n____
 God is on His throne high in His heav'n____

F Csus C

What His eyes be - hold would make you trem - - ble He
 What His eyes be - hold would make you trem - - ble He
 What His eyes be - hold would make you trem - - ble He

G

sees the hearts____ of man____
 sees your ev - 'ry plan____
 knows the hearts____ of man____

1. D.C. 2. 3.

1st x back to **INTRO**

2nd x repeat **CHORUS**

VERSE

Am F Em Am F

5. In the LORD I take ref - uge And plead the blood of His grace

Em F C Am G

____ No more a rea - son to fear____ the un - righ - teous

F C G Am F

For they will end_ in dis - grace____ But we will see_ His

Em G C

face